



Swiss TPH



**URIN FILTRATION (UFLITS)**

# Urinfiltration - Ufiltz

## Material

- Urin cup with lid
- 50 ml syringe
- Membrane filter
- Filter holder Fitting rubber gasket
- Forceps
- Slides & cover slips
- Transfer pipette, plastic

## Equipment

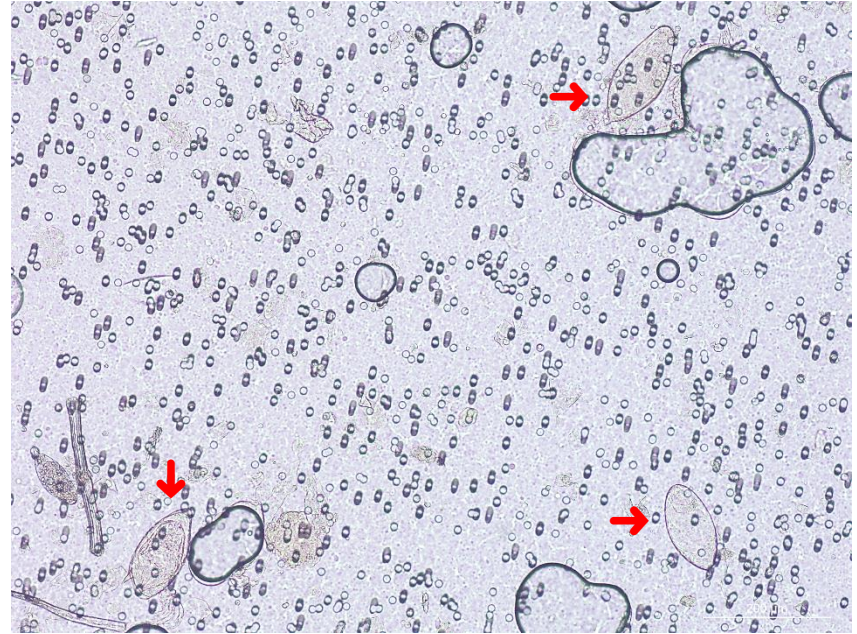
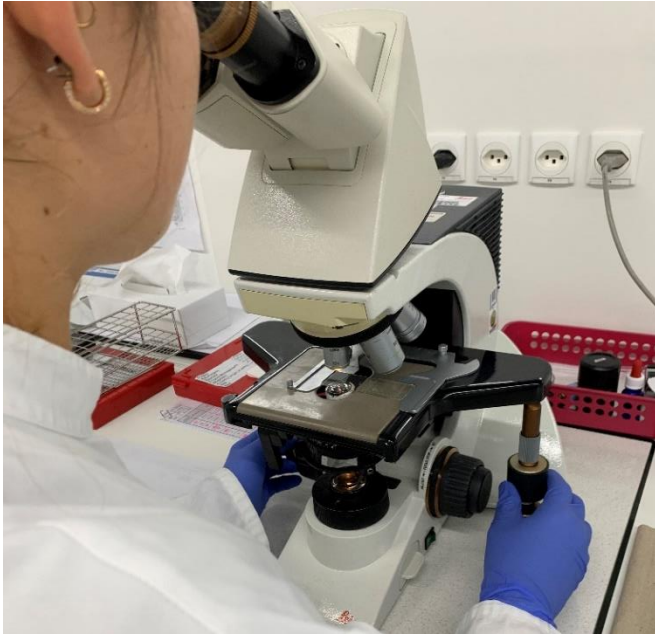
- Safety cabinet
- Microscope

# Urinfiltration - Ufilt

**The potential infectious specimen has to be handled in a safety cabinet**

- Put the membrane filter in the open filter holder
- Close the filter holder
- Aspirate the urine with a syringe
- Place the prepared filter holder on the syringe and press the urine through the filter
- Open the filter holder and pick the membrane with the forceps.
- Place it on a slide
- Fit a cover slip on it

# Urinfiltration - Ufilts



- Examine immediately the hole filter area with 10x objective for Schistosoma eggs

## Interpretation

Positive: Schistosoma eggs are detected in the microscope

Negative: no Schistosoma eggs are detected in the microscope