



Swiss TPH



SAF - METHOD

SAF Method

Material

- Paper underlayer
- Gloves
- Wooden spatula
- Funnel
- Gaze
- Stool specimen (fixed stool in SAF)
- Falcon Tube (15 ml)
- Ether and physiologic Saline
- Pasteur-Pipette + Peleus ball
- Slide + cover slip

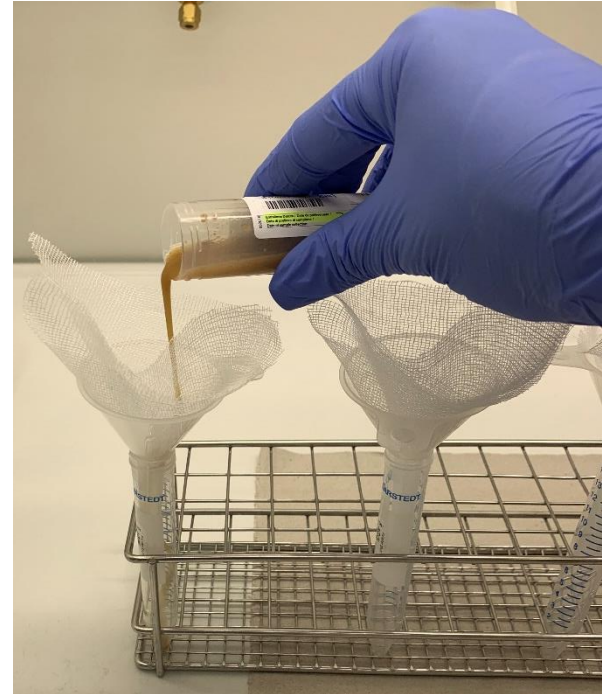
Equipment

- Laboratory fume hood
- Centrifuge
- Microscope

SAF Method



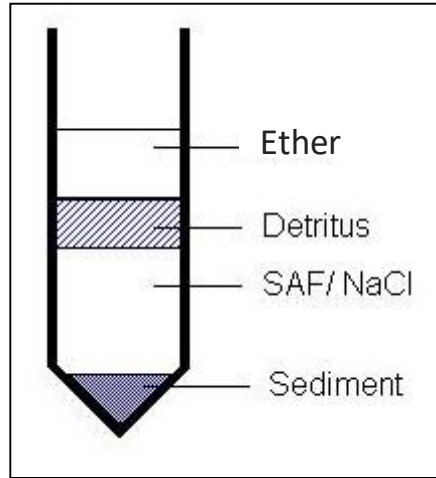
- Shake the closed specimen tube with the fixed stool sample
- pour some ml of the mixture through a funnel laid out with gauze into a Falcon tube



SAF Method

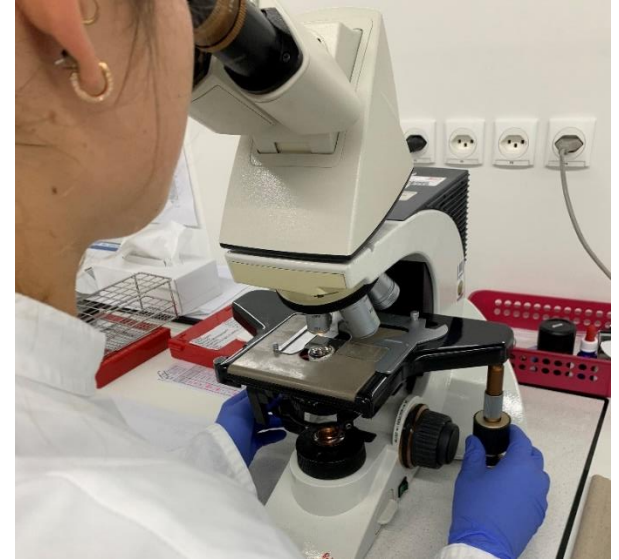
- Centrifuge 1 minute
- Aspirate the supernatant with a vacuum pump until reaching the sediment
- Refill the sediment with NaCl (physiologic saline) and ether
- Close the Falcon tube and shake it vigorously
- Centrifuge for 5 minutes

SAF Method



- Aspirate the supernatant 3 layers (ether, detritus und physiologic saline) and leaving the sediment

SAF Method



- Fabricate a slide
- Examine the slide under the microscope.